

JENSEN Transfer Dryer WR 60-120

Highest Performance with
Minimal Use of Energy



WR 120 with integrated, easily accessible heat exchangers

JENSEN Transfer Dryer WR 60–120

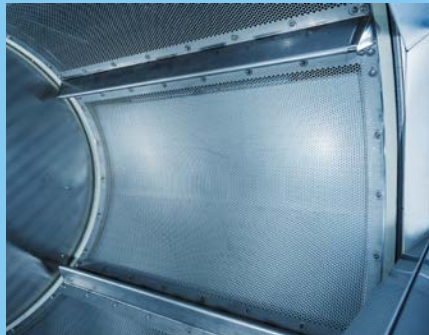
Highest Performance with
Minimal Use of Energy

In an environment of increasing energy costs and wages, compounding competitive pressure and decreasing margins, today's laundries face enormous challenges which must be met with comprehensive measures to increase efficiency. One of the primary goals of JENSEN's product development is to increase the efficiency and productivity of laundry systems as a whole.

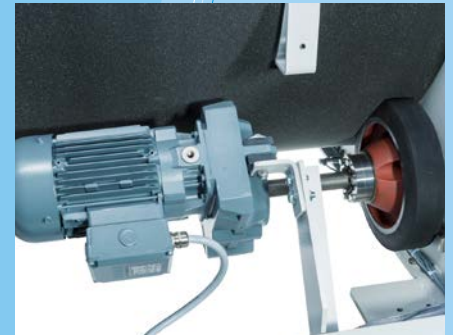
With the development of the latest generation of dryers, JENSEN is setting new standards in energy efficiency, productivity and reliability. The WR dryer adds an entirely new dimension to the word "effectiveness". The sophisticated design enables a 10% higher evaporative capacity with energy consumption reduced by approximately 10–15% in comparison with conventional dryers. Thanks to shorter drying times, productivity is increased and energy efficiency is drastically improved.



Large drum diameter for an optimal fall curve and outstanding finish quality



Inner drum with segment panels



Maintenance-friendly direct drive

The newest technology of WR dryers

Optimal air management

Newly developed frequency-controlled high-performance fans and optimized drum geometry improve the air flow and the heat distribution in the drum. This ensures an outstanding energy balance and consistent, reproducible drying results. The frequency controller for the fans and the individual, process-based control of air quantities guarantee extremely low-wear operation of the fan motors.

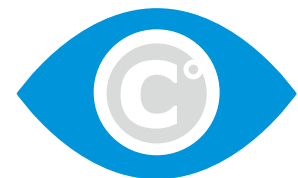
The new automatically controlled circulation flap continuously regulates the optimal ratio between fresh air and circulating air quantities depending on the degree of dryness of the goods and the individually adjusted program. As a result, the highest measure of efficiency is assured. In order to increase this even more, an extremely

compact plate heat exchanger that can be fully integrated in the dryer housing is available. In addition, WR dryers are very well sealed, which prevents escaping air. The outstanding insulation also assures low heat emission and a low noise level.

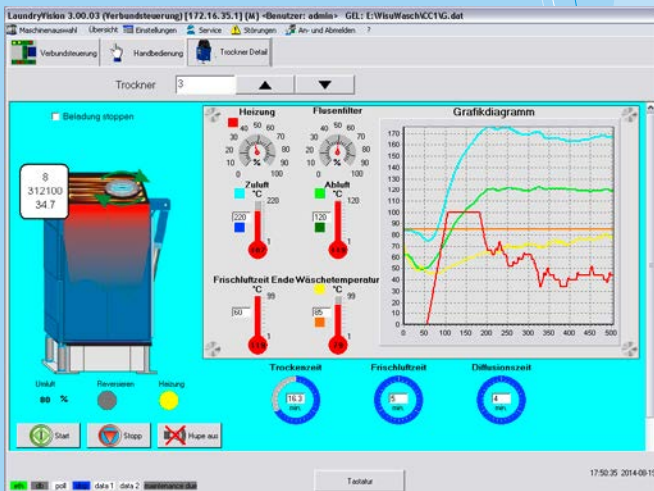
Gentle laundry handling

The large diameter of the drum enables an optimal fall curve and guarantees an outstanding air flow through the laundry. As a result, the finish quality is improved considerably by preventing the wrinkling and tangling of large laundry items. Thanks to the frequency control of the drive motor, custom adjustments of the drum speed for different types of laundry and drying processes is possible. An even more gentle and efficient handling is achieved as a result. Comprehensive technology with finely-tuned, sophisticated software regulates and monitors the drying process. With additional options, the dryers can be adjusted to the

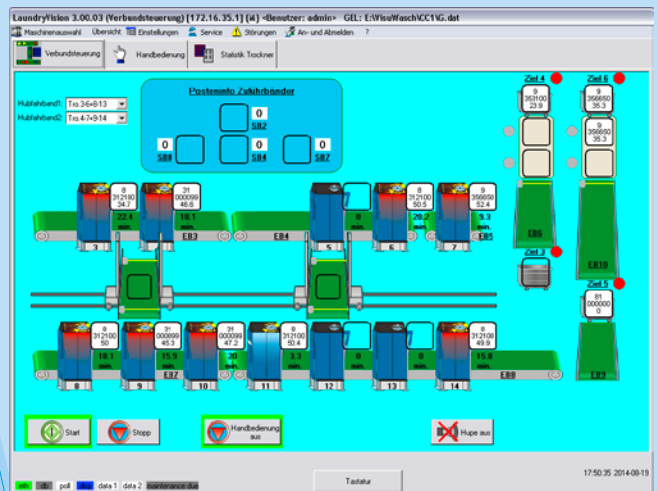
most detailed individual requirements. For instance, the InfraCare control unit continuously measures the exact temperature of the laundry load by means of an infrared sensor. This value serves as a starting point for an extremely precise and reliable control process. As a result, even items which are highly temperature-sensitive can be dried extremely gently with purposeful heat control.



Moreover, with InfraCare only the thermal energy which is actually needed is provided, which improves efficiency even more. The adaptive regulation of the drying process even accounts for excessively large loads in order to also save energy and time.



Detailed visualization



Touchscreen with visualization of the complete dryer system

Greatest ease of maintenance

The low-maintenance direct drive of the JENSEN DT dryer, already proven in practice thousands of times over, was chosen for the drive of the drum. Unlike conventional systems, a check or tensioning of toothed belts or chains is not necessary. The drive train was optimized for the WR dryer and designed with flanged drive wheels with reinforced bearings to be even more maintenance-friendly and long-lasting. The automatic adjustment of the guide rollers for the drum is an additional example of service-friendly design.

The WR dryer has a lint filter with segmented design. Each segment can be removed and reinstalled very quickly and conveniently thanks to an easily accessible central fastener. Maintenance openings on the fan housings enable quick and convenient inspection work on the fan's impellers. For even better accessibility

to the drum, the entire loading wall can be pivoted completely to the side after loosening a few screws. Even the burners in gas-heated dryers can be reached safely via a service platform with safeguarding on the discharge side of the dryer.

Compact design

Space is a valuable resource in many laundries. Therefore, JENSEN has designed WR dryers so that they can be arranged inversely, opening to the right or left, immediately adjacent to one another. As a result, valuable square metres of installation area are saved.

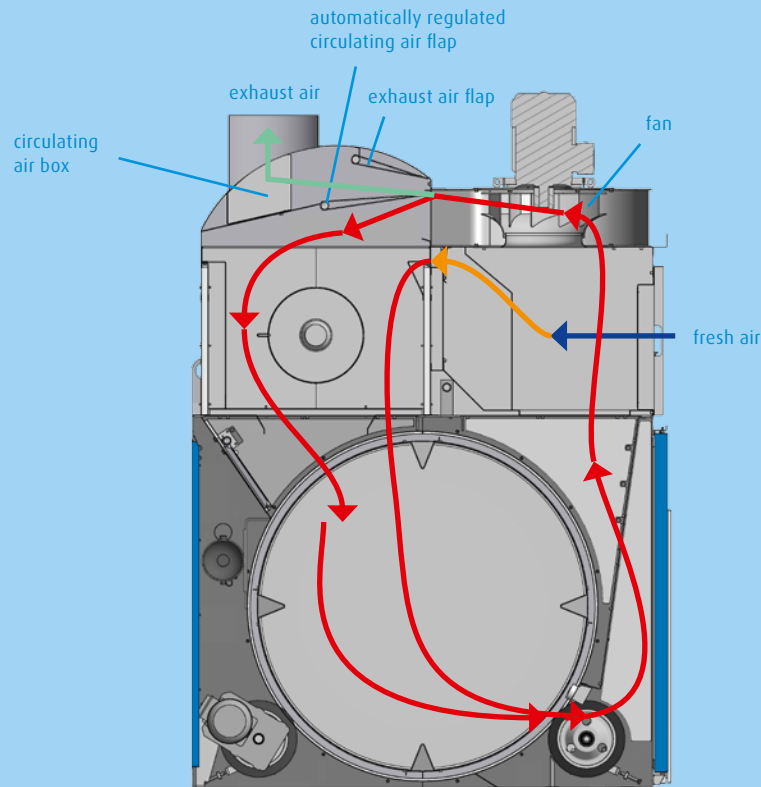
User-friendly control unit

Since JENSEN takes a holistic approach to the development of new products, the control of the dryers was also improved and the new sensors were adapted to ensure even more efficient, load-specific and at the same time reproducible drying

processes. The software is also designed such that the values of consumption recording devices, such as electric or gas meters can be recorded and transmitted to the JENSEN Cockpit central management system. Then all recorded data is evaluated and prepared in the form of various statistics. Energy consumption can be evaluated per machine or even per kilogram of laundry. With an appropriate weighing system, the average energy required to evaporate one litre of water in the dryer can be determined.

With this comprehensive data preparation, processes become transparent and optimization possibilities become recognizable. Therefore, all systems in a laundry can be precisely attuned to one another in order to achieve the highest





Innovative air flow for energy-saving operation

measure of productivity and efficiency on the whole. Each dryer has a separate voltage supply and a separate switch cabinet with PLC control unit. With the installation of several dryers, they are networked with a joint control unit. The operation and visualization of the dryer system and the upstream and downstream transport belts take place via a panel PC. There are 100 programs available per dryer.

A maintenance program automatically displays pending cleaning and maintenance tasks to be performed. With the selection of a future period in the software, the service tasks to be performed in these periods are incorporated into a maintenance schedule. Remote maintenance of the dryer control unit by the factory customer service is possible via an integrated interface.

Options

For flexible adaptation to individual requirements, the WR dryers have a comprehensive range of available options. These include:

- InfraCare control unit for an even more precise and efficient drying process
- Removable segment panels in the inner drum for simple and safe cleaning and maintenance work
- Two systems for automatic lint removal:
 - LintEx Uno as a local version with collecting bag at each dryer
 - LintEx Multi with central fan unit and a large collecting bag
- Cool-down by means of partially open loading door or automatically controlled fresh air flap
- Fully integrated heat exchangers for even better energy efficiency
- Motor control valve for precise temperature regulation in steam-heated dryers, particularly for very temperature-

sensitive items such as microfiber or laminates

- Teflon coating for the inner drum and the lint screen for reduced adhesion, such as plastic film from the laundry loads. The Teflon coating also makes it easier to clean the inner drum
- Tilting unit for quicker unloading (standard with WR 120)
- VacuTrans vacuum loading as an efficient and space-saving alternative to loading with conveyor belts or laundry trolley lift-tilt equipment.

Welcome to the new dry season

The WR series represents a new era in efficient drying in laundries: The latest technologies in combination with numerous innovations assures an efficient machine concept. Drying has never been so efficient, environmentally-friendly and convenient.



Saving time with the easily accessible maintenance platform

Installation

JENSEN is pleased to assist you in planning your laundry by providing excellent advice, layouts and technical data. Authorised JENSEN distributors or JENSEN engineers should carry out the installation to ensure that it is performed correctly.

Service

In addition, JENSEN provides an extraordinary after-sales service through a worldwide network of highly qualified Sales and Service Centres and distributors, all with their own maintenance and spare parts services.

Call us...

JENSEN provides a complete range of heavy-duty equipment for the laundry industry, delivered and installed according to your specifications. Please do not hesitate to contact us for further advice and information, or visit www.jensen-group.com

Local contact

www.jensen-group.com

Explore our equipment on **YouTube**
www.youtube.com/jensengroupcom